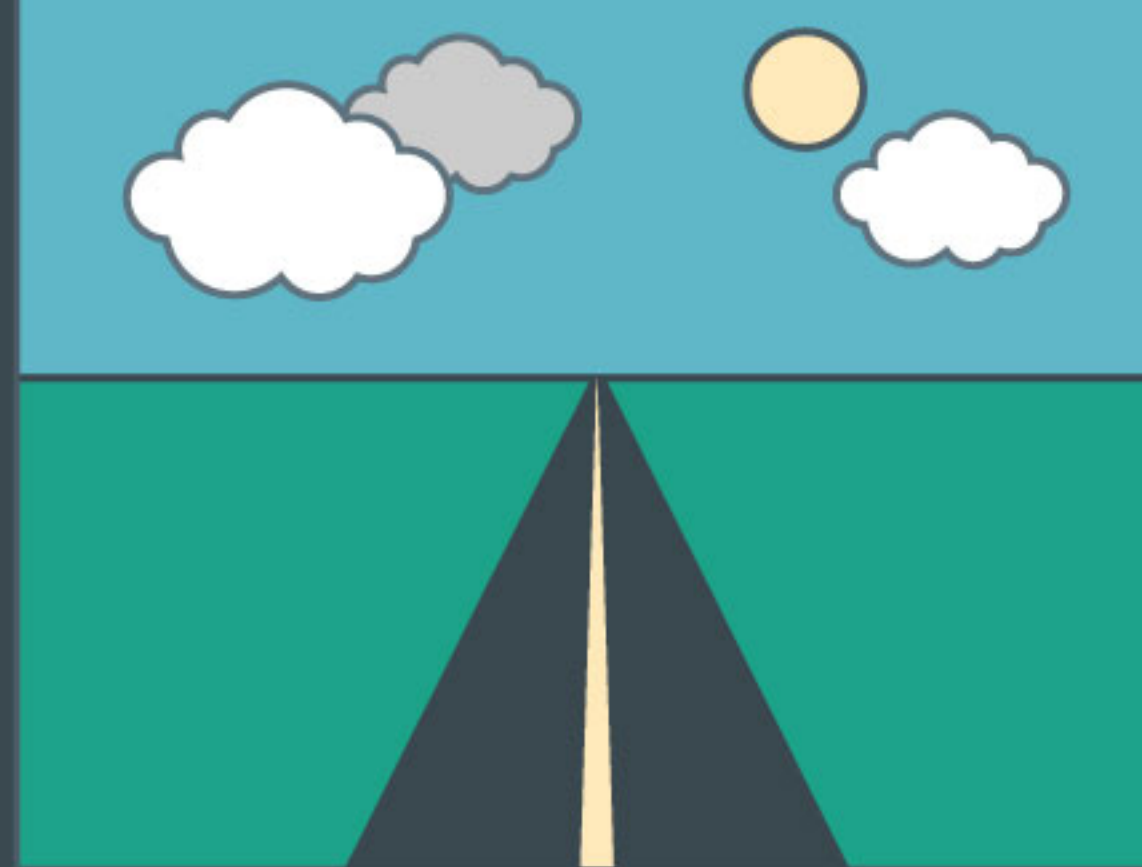


# THE ROAD *to* TEMPORARY HOUSING



You must have registered for assistance with FEMA in order to be considered for temporary housing assistance. If you are eligible for housing assistance, FEMA will conduct an interview to determine your needs & connect you with a temporary housing option.



## *Rental* RESOURCES



The **first and best** option is getting you into a safe, secure rental resource. If you turn down the rental resources offered to you without a valid reason, you may no longer be eligible for temporary housing assistance.

### VALID REASONS FOR TURNING DOWN A RENTAL RESOURCE MAY INCLUDE:

- Does not meet the family size
- Isn't accessible for those with disabilities
- Transportation for children in school is not available



## *Manufactured* HOUSING UNITS

If there are **no rental resources** available, you may be eligible for a temporary manufactured housing unit. A manufactured housing unit can be placed on a private site or a commercial site, though either process can be long, with many variables. This is why it is the last option and only available until you can find a permanent solution.

### SITE REQUIREMENTS FOR A UNIT MAY INCLUDE:

- Must accommodate the size of the unit
- Debris and hazardous material must be cleared
- Has the ability to connect to utilities
- Can't be in a high risk flood zone or in danger of mudslides or debris flow